

Lipman

DO BUSINESS BETTER

NURIT[®] 8000

Wireless Palmtop Solution



The **Handheld POS**
For **On-the-Go** Transactions



NURIT[®] 8000

Wireless Palmtop Solution



Building on decades of reliability and innovation, Lipman designs its products to assure an ongoing Cycle of Profits for its partners at every stage of the transaction process. Rapid response to customers' evolving needs - plus total commitment to round-the-clock support - assure a competitive edge for Lipman's worldwide client base. The **Nurit 8000** - Lipman's 4th generation wireless electronic payment terminal - generates increased transactions from a growing number of markets, bringing added income to the banks and processors that handle them.



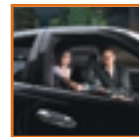
More Transactions, More Often, from More Markets

The **Nurit 8000** Wireless Palmtop Solution...

- is the smallest and most flexible handheld payment terminal available today
- offering the broadest range of optional features
- enabling fast, secure, error-free transactions

It's the perfect solution for ...

- on-the-move retailers who bring their products and services directly to their customers (including those based, until now, on cash-only transactions)
- banks and transaction processors seeking lucrative new markets



Added-Value Advantages

The **Nurit 8000** global payment platform offers a host of advantages at every stage of the transaction process, while enabling increased profits at lower operating costs.

- As the ultimate **Multi-Application Platform**, it supports
 - a range of **Payment and Value-Added Services**, including Credit, Debit, T&E, EBT, Smart Cards, Pre-Paid Cards, Loyalty/Gift Cards, and Proprietary Cards
 - a variety of easily integrated **Business Management Solutions**, including Inventory Control, Dispatch and Order Processing for markets such as Restaurants, Delivery Services, Taxis, etc.
 - Doubling as a **Cellular Phone**, it offers both voice and data transfer in real time
 - **Electronic Signature Capture** is enabled, using the optional touch screen
 - The sophisticated **Docking Station** allows landline communication, charges internal & spare batteries simultaneously, and easily interfaces with external devices
 - **Enhancing Cost Efficiency**, it eliminates redundant equipment, reduces power consumption, and creates a paperless environment
- The **Nurit 8000** can be purchased
- as a fully customized **standalone unit**, enabling customer-selected features for every type of market
 - as part of an **end-to-end system**, enabling new business models and revenue streams for banks, transaction processors, and VARs

Meeting the Needs of Demanding Markets

Designed to meet the needs of on-the-move markets operating in the most demanding conditions, the **Nurit 8000** is compact, lightweight, and easy-to-use, while at the same time, offering powerful, heavy-duty performance and dependability.



Ensuring Effortless, Ongoing Transactions

- The **Nurit 8000** all-in-one portable is both wireless and web-enabled, allowing ongoing communication.
- Featuring built-in PIN pad, smart card reader; optional touch screen & electronic signature capture, the Nurit 8000 - designed to meet EMV specifications - allows customer-activated payments to be made on the spot, with complete security.
- With the easy-to-load thermal printer; paper jams are avoided, assuring a steady stream of delay-free transactions.

Managing Multiple Networks

The Nurit Control Center, a sophisticated management system, enables control of multiple networks of distant terminals, including management of a wide range of market-specific applications that can be run on the **Nurit 8000**. The Control Center offers remote diagnostics and downloading capabilities, as well as simplified data collection and storage. Scalable and easily customized, it supports a variety of back-office functions for fast-changing markets.

Standard Features

- Built-in radio modem
- HW/SW support for GSM, GPRS, Mobitex, CDPD, DataTac & CDMA
- Multi-application support
- Large, back-lit graphical LCD display
- 18-button ergonomically designed back-lit keypad; programmable quick keys
- Dual track bi-directional magnetic card reader
- Built-in Smart Card Interface
- Internal, Built-in PIN pad
- Easy-load paper mechanism
- Quiet, graphical thermal printer
- Rechargeable batteries

Optional Features

- Touch screen for electronic signature capture
- Up to two accessible SAM modules
- Memory of up to 6 MB
- Headset and GSM radio modem for voice communication
- TCP/IP protocol support
- Docking station for battery recharge, modem, & interface for external devices; Bar Code Reader; Check Reader
- Infrared unit for wireless PC download & transfer of data between terminals
- Supports 3rd party applications, such as address book, notepad, messaging



Delivery
■
Stadium & Arena Sales
■
Restaurant & Food Services
■
Contractors & Consultants
■
Audio / Video Installers
■
Retail
■
Limousine & Taxi
■
Mobile Vendors
■
Fairs & Markets
■
Traveling Sales People
■
Conventions / Exhibitions
■
Golf and Tennis Venues
■
Outdoor Entertainment

Specifications

Human Interface

- PDA sized back-lit graphical LCD display (touch screen optional)
- 18-button ergonomically-designed back-lit keypad
- Dual track bi-directional tracks 1 and 2 magnetic card reader (tracks 2 and 3 optional)

Processor

- Powerful ultra-fast 32-bit RISC (ARM7) microprocessor

Memory

- 2 MB flash memory, extendable to 4 MB, for S/W
- 512 KB battery backed-up RAM for user data (including RAM disk), extendable to 2 MB; six-month minimum data retention

Communication Capabilities

Wireless

- Built-in radio modem
- Internal antenna
- Hardware and software support for a wide range of cellular networks:
 - GSM dual-band (optional tri-band) with headset connector for use as mobile telephone
 - GPRS, Mobitex, CDPD, DataTac, CDMA
- IrDA infrared communication (optional) for short-link cableless communication (up to 30 cm)

Telephone-Line via optional Docking Station or external modem

- Dial-up modem at up to 14.4 kbps for telephone communication (33.3 kbps optional)
- CCITT V.22bis and V.32bis; Fast Connect
- Asynchronous and synchronous protocols, including HDLC
- Complies with FCC part 68 and TBR 21

TCP/IP protocol support

- For wireless, telephone line and direct cable applications

Programming Features

- Multi-Application Operating System
- Backwards compatible with existing NURIT applications
- Software Development Kit (SDK), easy-to-use API, application libraries and debugging tools
- Compressed application downloading via radio modem, IrDA, RS-232 or phone line

Internal built-in PIN Pad (Optional)

RS-232 port for external devices

Smart Card features

- Built-in ISO 7816 Smart Card Interface (Optional)
- Designed to meet EMV Level 1 and Level 2 specifications
- Up to two accessible ISO 7816 SAMs located under the battery pack

Printer

- Quiet, graphical thermal printer; fast 12.5 lines-per-second
- Easy-load paper mechanism
- Standard 21/4" (57 mm) wide paper, 24/40 characters per line
- Out-of-paper detection
- Multi-language character/font support

Power

- Internal rechargeable Li-ion battery pack with protection circuitry
- 12 hours of general operation or over 200 transactions per charge
- Car charger option

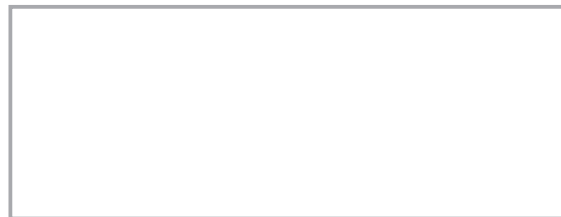
External Docking Station (Optional)

- Fast 14.4 kbps telephone line modem (33.3 kbps optional)
- Built-in charger; can charge internal and a spare battery pack simultaneously
- RS-232 PC port connector (RJ-45) for external devices such as barcode and check readers
- Optional RJ-11 4/4 connector for external PIN pad

Mechanical (terminal only)

- Dimensions: 82 mm/3.23" (H) x 108 mm/4.26" (W) x 230 mm/9.06" (D)
- Weight: 600g/1.3 lb, including battery pack and paper roll

All features and specifications are subject to change without notice. All trademarks mentioned are registered by their respective owners.



Available At:
iAcceptCreditCards
<http://www.iAcceptCreditCards.com>
Sales@iAcceptCreditCards.com
800 438 8262 Fax 951 698 7263



QUICK MERCHANT ACCOUNT ENROLLMENT APPLICATION

Please complete this form. Click a gray field to enter in data, use the tab key to go to the next field.

Fax to: 951 698 7263 or Email as an attachment to: Sales@iAcceptCreditCards.com

BUSINESS INFORMATION

LEGAL NAME OF BUSINESS	
DOING BUSINESS AS	
LOCATION ADDRESS	
CITY	
STATE	
ZIP CODE	
MAILING ADDRESS	
CITY	
STATE	
ZIP CODE	
BUSINESS TELEPHONE #	
BUSINESS FAX #	
FEDERAL TAX I.D.#	
BUSINESS TYPE	CHOOSE
TYPE OF BUSINESS (BE SPECIFIC)	
DATE BUSINESS OPEN	

MONTHLY VOLUME		AVERAGE TICKET	
PERCENT OF BUSINESS:	CARD SWIPE	KEYED W/IMPRINT	KEYEDW/O IMPRINT

WEBSITE ADDRESS	
EMAIL ADDRESS	

OWNERSHIP INFORMATION

PRINCIPAL #1 LEGAL NAME	PERCENTAGE OF OWNERSHIP		
ADDRESS, CITY, STATE & ZIP			
PHONE #	CELL PHONE #	ADDITIONAL PHONE #	
RESIDENCE OWN/RENT	CHOOSE	HOW LONG	
SOCIAL SECURITY #	DATE OF BIRTH		
DRIVERS LICENSE #	STATE/EXPIRATION DATE		

PRINCIPAL #2 LEGAL NAME	PERCENTAGE OF OWNERSHIP		
ADDRESS, CITY, STATE & ZIP			
PHONE #	CELL PHONE #	ADDITIONAL PHONE #	
RESIDENCE OWN/RENT	CHOOSE	HOW LONG	
SOCIAL SECURITY #	DATE OF BIRTH		
DRIVERS LICENSE #	STATE/EXPIRATION DATE		

REFERENCES

BANK	ACCOUNT #	PHONE #
TRADE	ACCOUNT #	PHONE #

EQUIPMENT ORDERED/PROCESSING SOLUTION

PLEASE COMPLETE YOUR CHOICE OF EQUIPMENT	
CHOOSE	OTHER
PAYMENT TERMS	
CHOOSE	